

Boom joint angular transducer, 022723

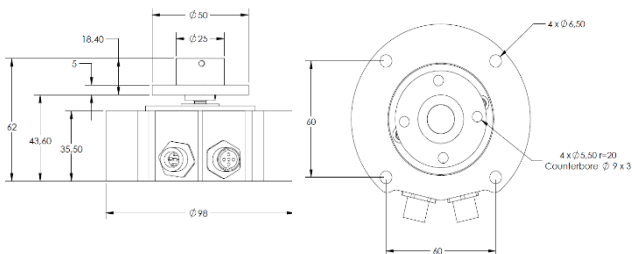


The boom joint transducer measures a non gravity depended angular movement.

The transducer has 2 connectors for the CAN-Open communication including power supply

The device is built to be used in harsh environment where high accuracy is needed.

Normally used in a system together with other transducers to form a complete angle measuring instrument.



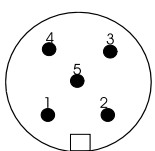
Technical data

Supply voltage	10 – 30 VDC
Power supply	<100mA
Measurement range	360°
Accuracy	Better than ±0,25°
Special version	Better than ±0,1°

Resolution	±0,001°
Bus Connection	CAN-Open

Housing	Steel housing, zinc plated
Mounting	4* M6 screws
Mechanical connect.	Flexible joint
Connection	Standard M12 A-code plug, 5 pin Male/Female

Operating temp.	-40 - +70°C
Protection	IP67



PIN	Signal
1	Not Connected
2	10..30V DC (Supply voltage)
3	GND / 0V
4	CAN_H (dominant high)
5	CAN_L (dominant low)